

gvSIG:Untitled

File Show Layer Window View Help

Project manager

Document types

View Table Map

View

Untitled - 0

Session properties

Session name: Untitled

Saved in:

Creation date: Apr 13, 2007

View: Untitled - 0

Add layer

File Georeference JDBC WFS WMS WCS ArcIMS

Server

http://62.48.187.115/cgi-bin/mapserv.exe?map=map4w/lapps/pub/Arts\_caop.map8

Refresh cache

Connect

Description

Name: IGP Servidor WFS CAOP

Carta Administrativa de Portugal Continental

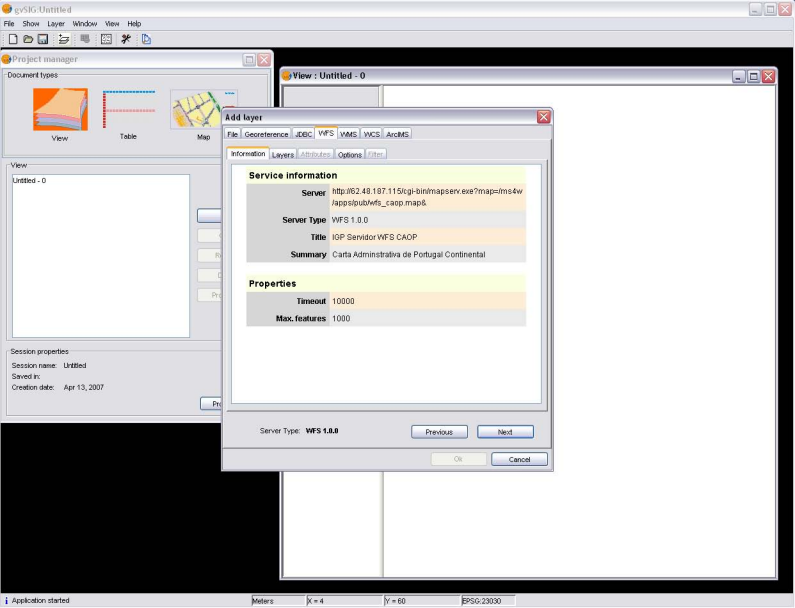
Server Type: **WFS 1.0.0**

Previous Next

OK Cancel

i Application started

Meters X = 4 Y = 60 EPSG:23030



gvSIG:Untitled

File Show Layer Window View Help

Project manager

Document types

View Table Map

View

Untitled - 0

Session properties

Session name: Untitled

Saved in:

Creation date: Apr 13, 2007

View : Untitled - 0

Add layer

File Georeference JDBC WFS WMS WCS ArcIMS

Information Layers Attributes Options Filter

**Service information**

**Server** http://62.48.187.115/cgi-bin/mapserv.exe?map=fms4w/apps/pub/wfs\_caop.map&

**Server Type** WFS 1.0.0

**Title** IGP Servidor WFS CAOP

**Summary** Carta Administrativa de Portugal Continental

**Properties**

**Timeout** 10000

**Max. features** 1000

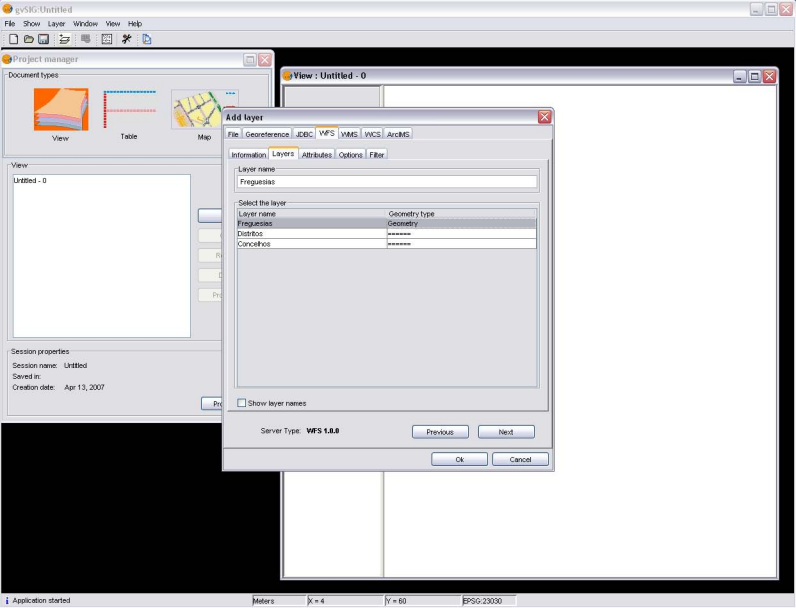
Server Type: **WFS 1.0.0**

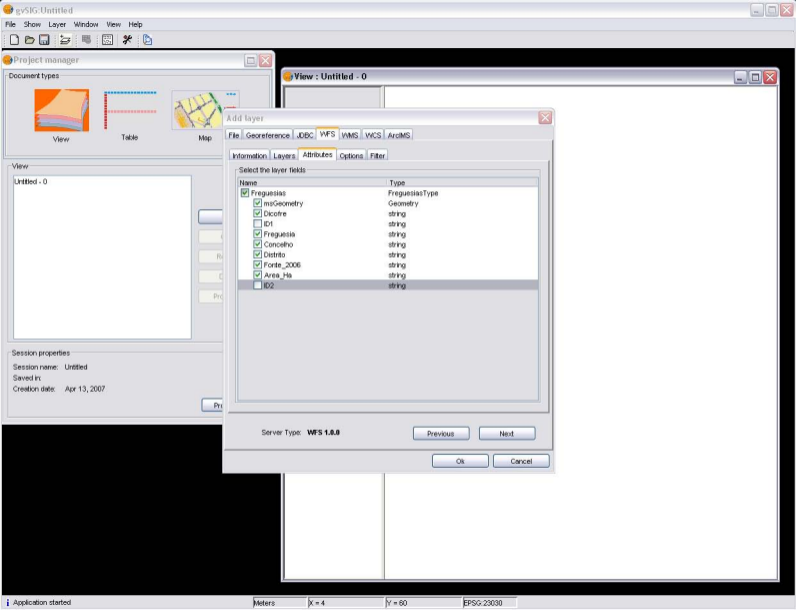
Previous Next

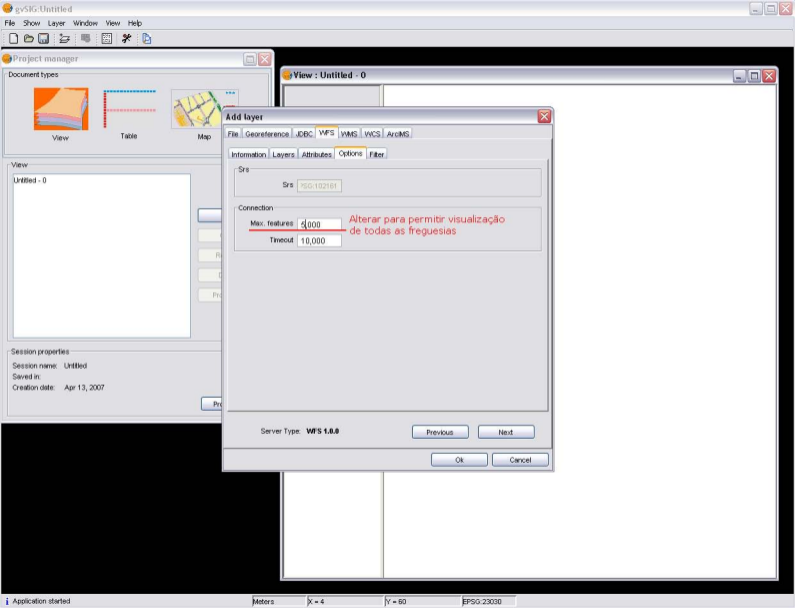
Ok Cancel

Application started

Meters X = 4 Y = 60 EPSG:23030







gvSIG:Untitled

File Show Layer Window View Help

Project manager

Document types

View Table Map

View

Untitled - 0

Session properties

Session name: Untitled

Saved in:

Creation date: Apr 13, 2007

View: Untitled - 0

Add layer

File Georeference JDBC WFS WMS WCS ArcIMS

Information Layers Attributes Options Filter

Srs

Srs PSG:102161

Connection

Max. features 4,000

Timeout 10,000

Alterar para permitir visualização de todas as freguesias

Server Type: WFS 1.0.0

Previous Next

Ok Cancel

i Application started

Meters X = 4 Y = 60 EPSG:23030

